

Smythe Academy Mandatory School Uniform Policy

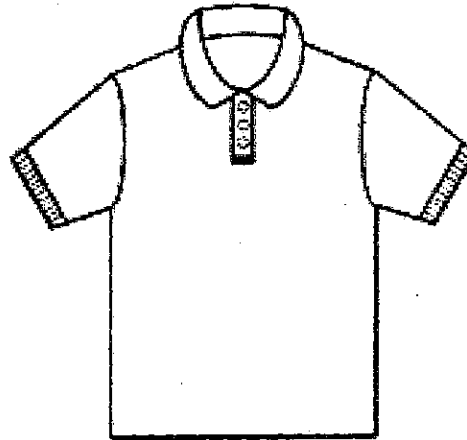
All students at Smythe Academy will wear uniforms to school every day, beginning with the first day of school, until the last day of school. Student's uniform clothing should fit, be neat and clean, and conform to standards of safety, good taste, and decency. Uniform clothing that exposes cleavage, private parts, the midriff, undergarments – to include wearing pants below their natural waist, or that is otherwise sexually provocative, is prohibited. Any type of clothing, accessories, outerwear, undershirts, or shoes that are RED or BLUE will not be allowed. Students who chose to wear clothing that is not appropriate uniform clothing will not be allowed to attend class until Parent/guardian brings a change of clothing for them.

Uniform Description

Smythe students will wear uniforms that fit these descriptions:

1. ALL shirts must be SOLID White, Black, or dark Forrest Green.
2. ALL shirts must have a polo-style collar. Polo-style collars have 1-4 buttons and a collar that turns over around the neck.

Example:



3. ALL pants will be tan/beige in color. Pants must fit around the waist; no 'bagging' or 'sagging' will be allowed. If pants are too large around the student's waist, they must wear a belt. Pants must also be large enough for students to pull up to their waist.
4. ALL shorts and skirts MUST be minimally long enough to extend beyond the students down stretched fingers. If shorts/skirt is too short, student will be asked to change, or will be detained in the office until a change of clothes are brought to school.
5. ALL outerwear – to include coats, sweaters, hoodies, and accessories (scarves, snow hats, caps, etc.) must not contain images or language that is vulgar, sexually suggestive, discriminatory, obscene, libelous, or that promote illegal or violent content, such as the unlawful use of weapons, drugs, alcohol, tobacco, drug paraphernalia, gangs, or that contains threats, is prohibited.